

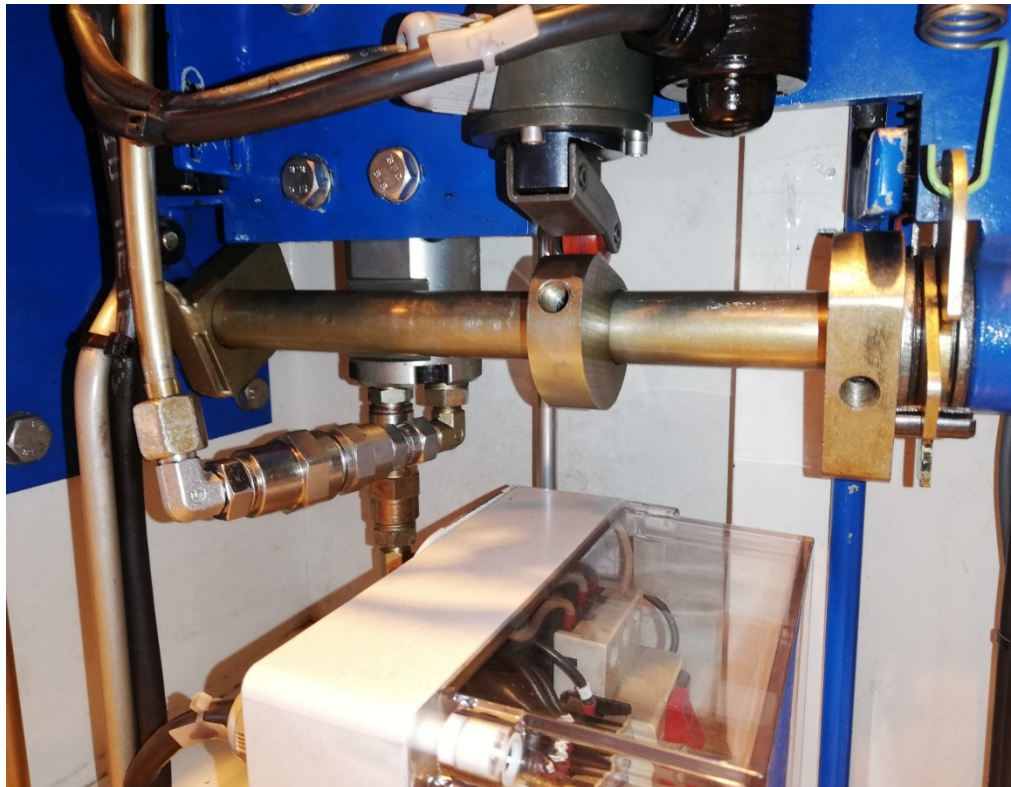
Date:	No:	Page:
03.04.2019	TB2019-04	1 of 2

Applies to:		Bulletin subject:
WTD	X	Operation axle with keyway all cams
SAFETY WINDOWS		
AUTOMATION		
Created by:		GDA
Approved by:		OOR

Introduction:

IMS Watertight doors manufactured before 2007 was not delivered with keyways on the operation axles. This can potentially result that the operation handles loosens making the door impossible to operate locally.

For doors delivered on or about 2007, operation axels are manufactured with keyways limiting this risk. For doors delivered without keyways IMS can provide an upgrade kit. This upgrade will reduce the possibility for the door to get jammed or not possible to operate during opening and closing sequence



Picture 1 Door without keyway, only set screw.

Date:	No:	Page:
03.04.2019	TB2019-04	2 of 2



Picture 2 Door with keyway

Implementation details:

PN#10000306 Operation Axle Hyd, BS, Complete, includes:

- Complete new operation axle and all cams with all parts for rebuilding.

Tools needed:

- Allen key to loosen old sett screws. In some cases, the old operations axle need to be cut to be able to remove it due to groves in axle from the setscrews. Cutting with electric grinder.

Use of IMS Personnel:

- | | |
|---------------------------|-------------------------------------|
| Is required | <input type="checkbox"/> |
| Is recommended | <input checked="" type="checkbox"/> |
| Can assist | <input checked="" type="checkbox"/> |
| Assistance not applicable | <input type="checkbox"/> |

Please contact: spareparts@imstec.no for further information.