

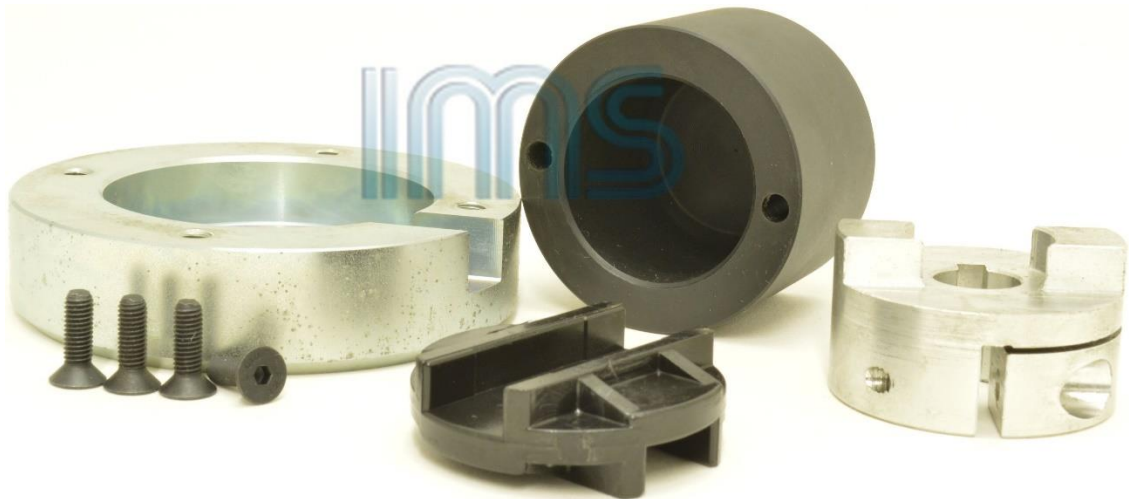
Issue date:	Place:	Page:	Ident.
08.09.2020	Akland, Norway	1 of 1	TB2020-01

This document applies to:		Internal use:	External use:	X
Applies to:		Bulletin subject:		
WTD	X	CHANGE FROM 150W TO 300W MOTOR		
SAFETY WINDOWS				
AUTOMATION				
Created by:		VML		
Approved by:		KRM / GDA		

CHANGE FROM 150W TO 300W MOTOR

New motor 300W (P/N:10000194) must be used as a replacement for 150W motor. It will need a rebuilding kit as well as the motor.

P/N 10013259 - Rebuilding Kit El door 150W-300W



If control system has line monitoring activated, it will be necessary to change setting in Control Card, adjust resistance from 0,3 to 0,1 Ohm. (please contact IMS Service department for an access code, please see user's manual electric description: chapter 2.2, 11.2)